

2011

# Fine-scale forest fragmentation

in the Žďárské vrchy Protected Landscape Area



Petra Šimová  
*Faculty of Environmental Sciences  
Czech University of Life Sciences, Prague*

### Annotation

The map collection falls under results of research focused on landscape structure of Protected Landscape Area Žďárské vrchy. Individual maps represent fragmentation of forests, described by following landscape metrics: number of patches (NP), mean patch size (MPS) and total edge (TE). The index values were computed using Patch Analyst for ArcGIS 9.3. The layer of forests, elaborated on the basis of ZABAGED dataset, served as input for the calculation

### Author

Petra Šímová

*Faculty of Environmental Sciences*

*Department of Applied Geoinformatics and Spatial Planning*

Kamýcká 129, 165 00 Praha 6 – Suchbátův

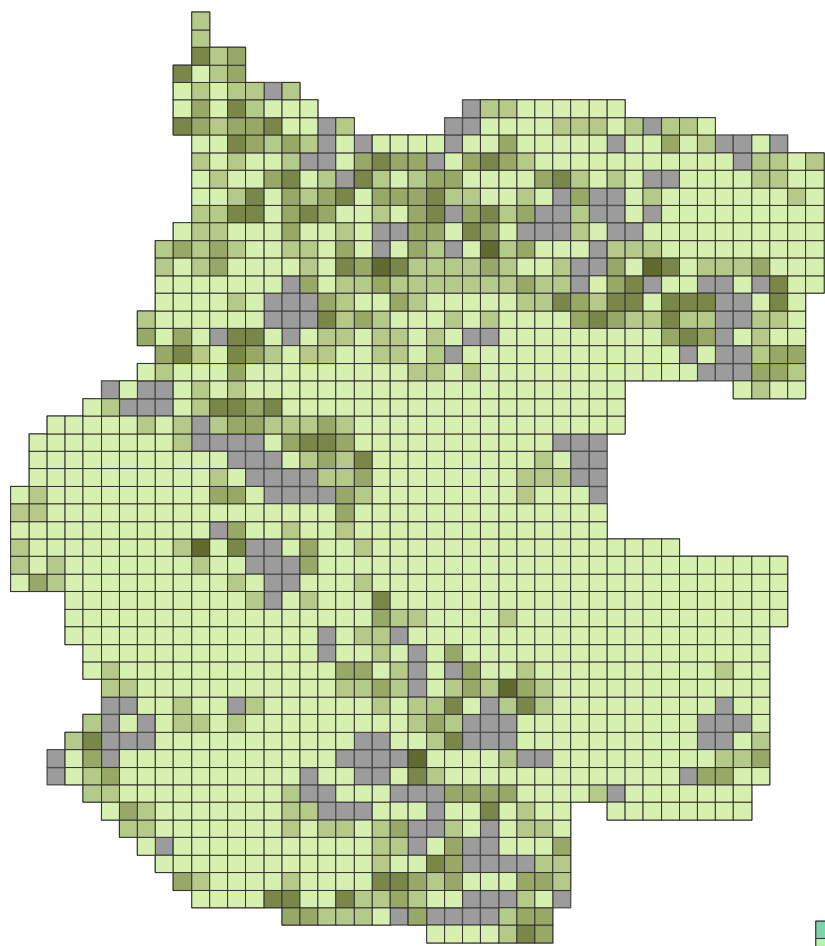
[simova@fzp.czu.cz](mailto:simova@fzp.czu.cz)

### Acknowledgements

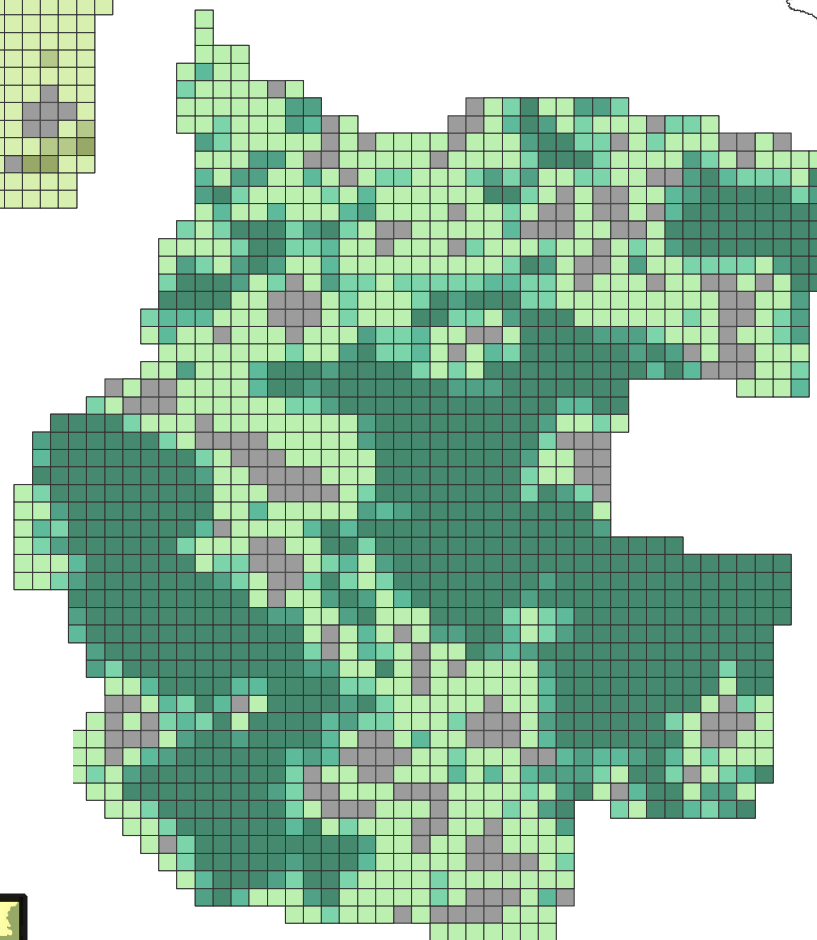
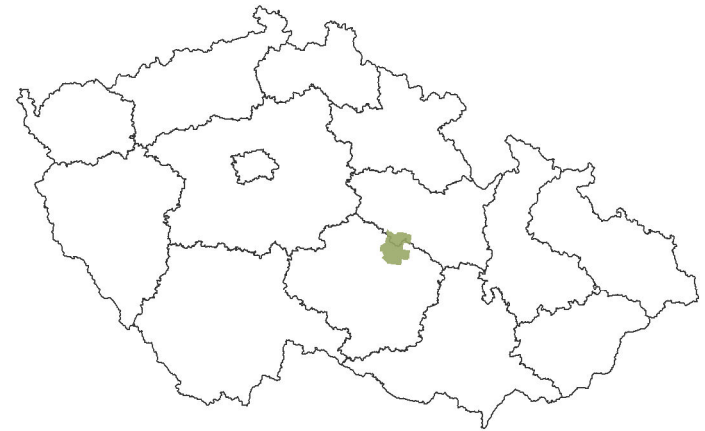
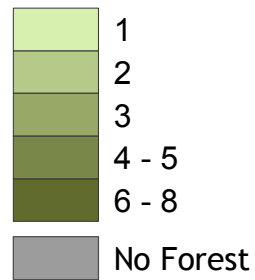
The study was funded by the Faculty of Environmental Sciences, Czech University of Life Sciences Prague (Grant No. 42900/1312/3166).

# FINE-SCALE FOREST FRAGMENTATION

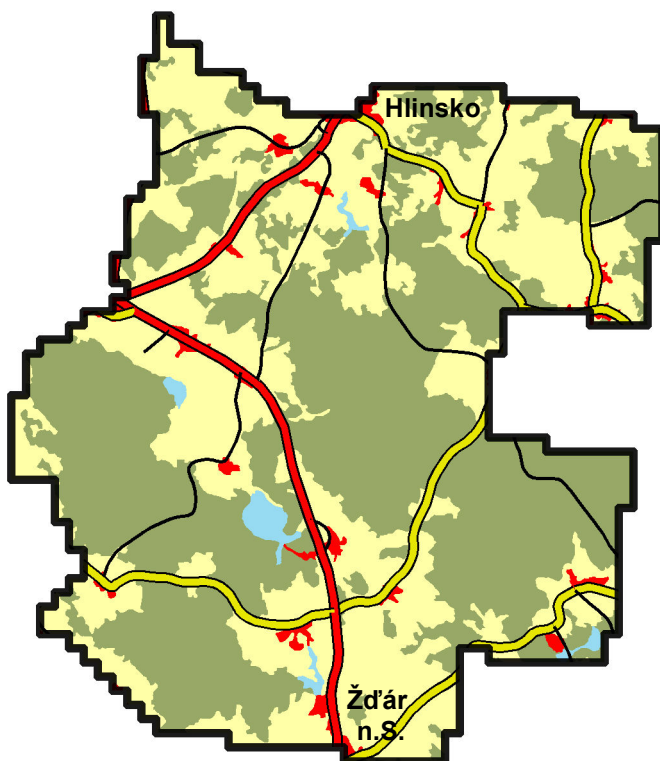
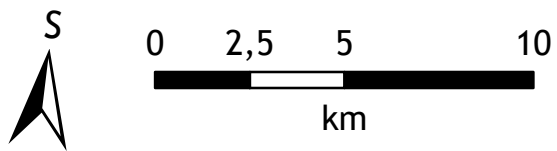
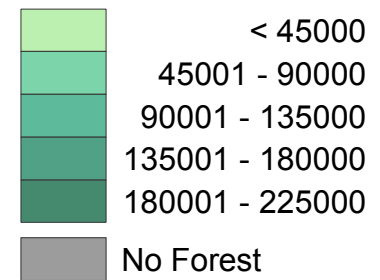
IN THE ŽĎÁRSKÉ VRCHY PROTECTED LANDSCAPE AREA



NUMBER OF PATCHES



MEAN PATCH SIZE (SQ. METERS)



TOTAL EDGE (METERS)

