

***Buellia dispersa* in the Joshua Tree National Park (California, U.S.A.)**

Map collection



Buellia dispersa. Photo by Jana Kocourková.

Kerry Knudsen, Kocourková Jana*

*Czech University of Life Sciences Prague, Faculty of Environmental Sciences, Department of Ecology, Czech Republic

© 2012

Abstract – *Buellia dispersa* is known in Africa, Europe and North America. It is frequent but scattered in southern California but is common in the Mojave Desert in Joshua Tree where it occurs on granite, monzogranite, basalt, and gneiss. The map of distribution of *B. dispersa* in Joshua Tree National Park is presented.

Key words – *Buellia dispersa*, lichens, map of distribution, atranorin, Mojave Desert

Authors – Kerry Knudsen¹, Kocourková Jana²

¹The Herbarium, Department of Botany & Plant Sciences, University of California Riverside, California 92521, U.S.A. – e-mail: Knudsen@ucr.edu

²University of Life Sciences Prague, Department of Ecology, Faculty of Environmental Sciences, Kamýcká 129, Praha 6 – Suchbátka, CZ – 165 21, Czech Republic – e-mail: kocourkovaj@fzp.czu.cz

***Buellia dispersa* A. Massal.**

DESCRIPTION. – Bungartz et al. 2007.

WORLD DISTRIBUTION. – Africa, Europe, North America. Substrate: non-calcareous rock; on granite, monzogranite, basalt, and gneiss in Joshua Tree.

NOTES. – *Buellia dispersa* is frequent but scattered in southern California. In the transverse ranges it occurs on the Channel Islands (Santa Cruz and Santa Rosa Islands) and in the Santa Monica Mountains. In the peninsular ranges it occurs in the Cuyamaca, Santa Ana, and San Jacinto Mountains. It was collected in the Sonoran Desert in Martinez Canyon in Thermal and in Plum Canyon and near Ranchita in Anza-Borrego Desert State Park (UCR Herbarium 2012). It extends north into San Benito County and the southern Sierra Nevada Mountains in Inyo County. It is common in the Mojave Desert in Joshua Tree, documented by 22 collections. It was reported from the Granite Mountains (Knudsen and Werth 2008). Atranorin was only detectable with thin-layer chromatography, and all specimens regularly contained 2-O-methylperlatolic acid with confluent acid (Michalová 2012).

DISTRIBUTION. – 49 Palm Canyon, Hidden Valley, hills near west entrance, Little San Bernardino Mountains (Eureka Peak, Pushwalla), Malapai Hill (on basalt), Ryan Mountain, upper Juniper Flats, Wonderland of Rocks (Keys Ranch, Wall Street Mill, Willow Hole).

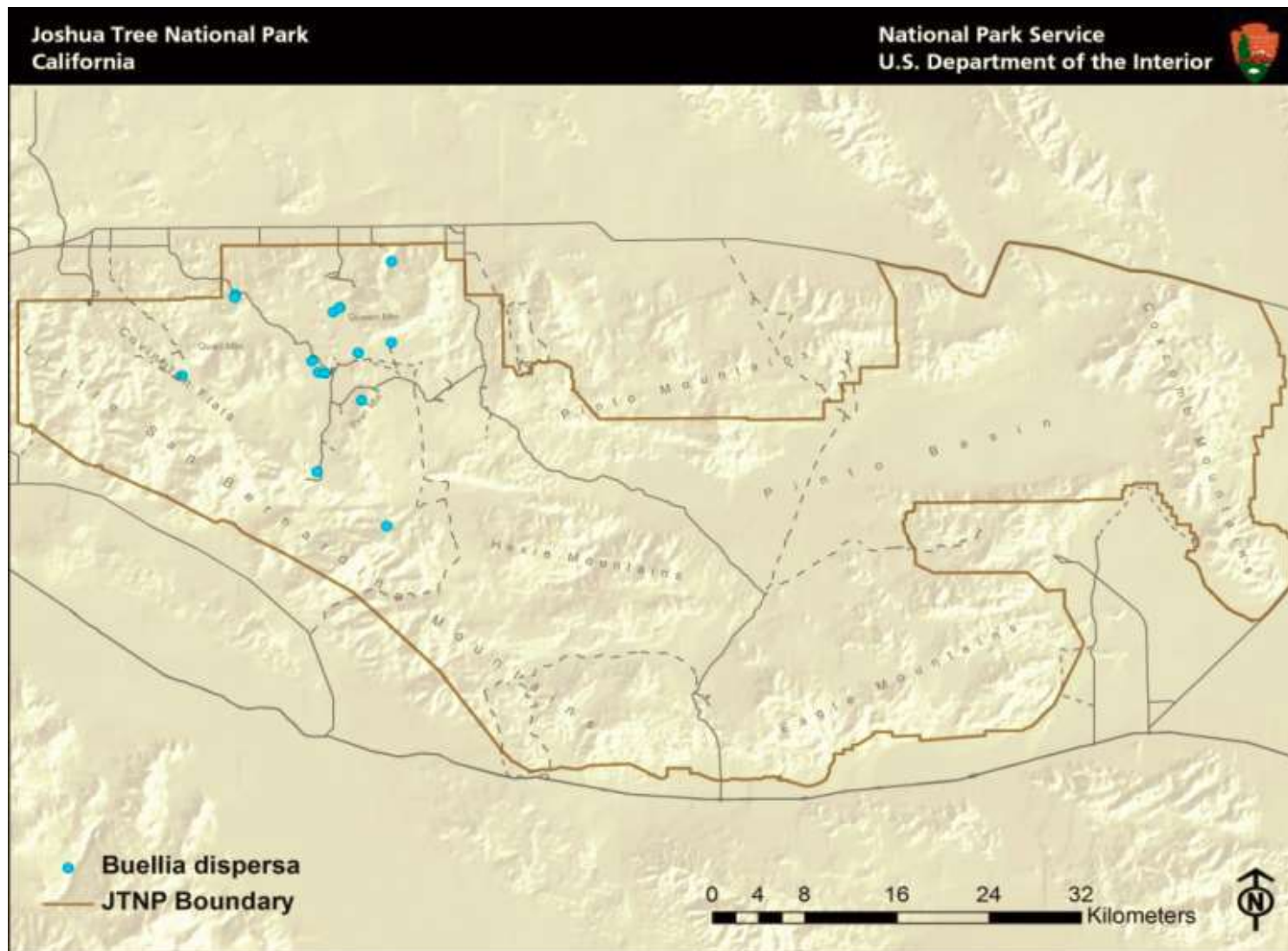
LITERATURE CITED

- Bungartz, F., A. Nordin and U. Grube. 2007 [2008]. *Buellia*. In: T.H. Nash III, C. Gries and F. Bungartz (eds.). Lichen Flora of the Greater Sonoran Desert Region 3: 113–179. Lichens Unlimited, Tempe, AZ.
- Knudsen, K. and S. Werth. 2008. Lichens of the Granite Mountains, Sweeney Granite Mountain Desert Research Center, southwestern Mojave Desert, San Bernardino County, California.
- Evansia 25(1): 15-19. Michalová M. 2012. Chemistry of lichens of southwest Mojave desert. 101 pp., Ms [Dipl. Th.; depon. In: Faculty of Environmental Sciences, Czech University of Life Sciences, Praha]. Duplicate copy in library of New York Botanical Garden.

ACKNOWLEDGEMENTS

The work of Kerry Knudsen was funded by a co-operative agreement between Joshua Tree National Park and the University of California at Riverside (UCR). The work of Jana Kocourková was supported financially by the KONTAKT II, Program of International Cooperation in Research and development for scientific cooperation between the CR and USA, LH 11057 from Ministry of Education, Youth and Sports of the Czech Republic.

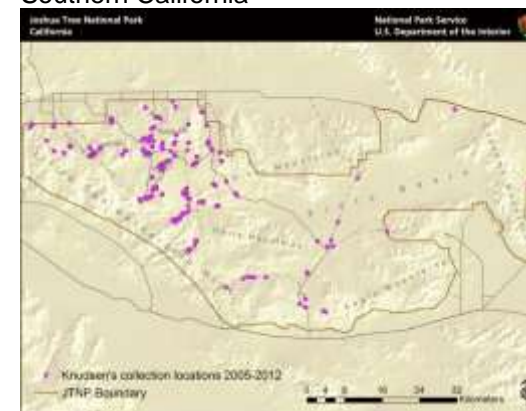
Buellia dispersa



Known distribution of *Buellia dispersa* in JTNP.



Location of Joshua Tree National Park in Southern California



All 238 of Knudsen's and Kocourková's lichen collection sites throughout Joshua Tree National Park between the years of 2005 and 2012.

Map collection, maps made in software ArcGIS, 10.1; electronic form, file type pdf.