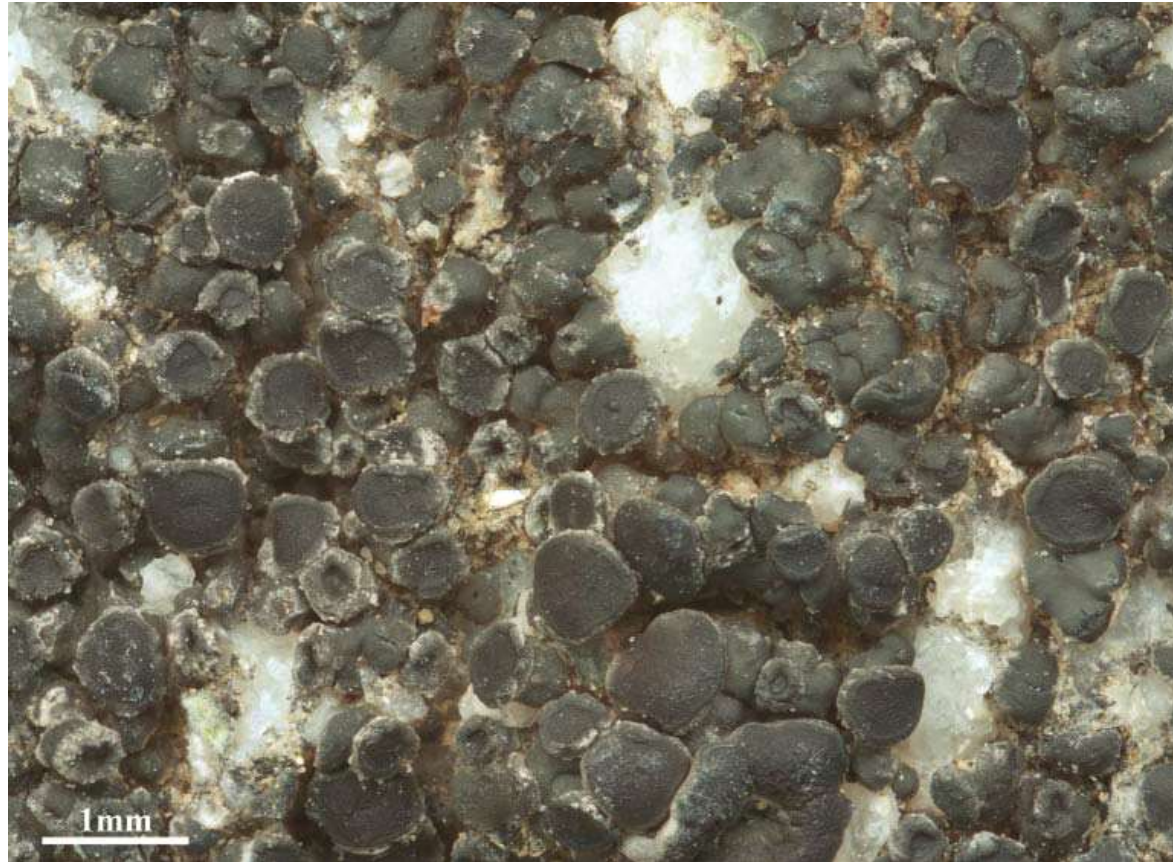


***Caloplaca albovariegata* in the Joshua Tree National Park (California, U.S.A.)**

Map collection



Caloplaca albovariegata. Photo by Tim Wheeler

Kerry Knudsen, Kocourková Jana*

*Czech University of Life Sciences Prague, Faculty of Environmental Sciences, Department of Ecology, Czech Republic

© 2012

Abstract – *Caloplaca albovariegata* is known only from western North America. In southern California it has scattered distribution. It is common in the Mojave Desert in Joshua Tree, documented by 25 collections. It grows on non-calcareous rock, serpentine; on monzogranite and gneiss in Joshua Tree. The map of distribution of *C. albovariegata* in Joshua Tree is presented. We compiled a detailed list of records based on GPS data.

Key words – *Caloplaca albovariegata*, distribution, lichens, Joshua Tree, serpentine, western North America

Authors – Kerry Knudsen¹, Kocourková Jana²

¹The Herbarium, Department of Botany & Plant Sciences, University of California Riverside, California 92521, U.S.A. – e-mail: Knudsen@ucr.edu

²University of Life Sciences Prague, Department of Ecology, Faculty of Environmental Sciences, Kamýcká 129, Praha 6 – Suchbát, CZ – 165 21, Czech Republic – e-mail: kocourkovaj@fzp.czu.cz

***Caloplaca albovariegata* (B. de Lesd.) Wetmore**

DESCRIPTION. – Wetmore 2007.

WORLD DISTRIBUTION. – Western North America.

SUBSTRATE. – Non-calcareous rock, serpentine; on monzogranite and gneiss in Joshua Tree.

NOTES. – *Caloplaca albovariegata* was originally described from New Mexico (Wetmore 1994). It has a bluish-green thallus. It can be mistaken for a *Lecania* in the narrow septum stage of the ascospore ontogeny. In southern California it is scattered in the Santa Monica Mountains, in the Sonoran desert in Anza Borrego Desert State Park, and in San Jacinto Mountains. It was collected on serpentinite in San Benito County (Rajakaruna et al. 2012.) It is common in the Mojave Desert in Joshua Tree, documented by 25 collections.

DISTRIBUTION. – Little San Bernardino Mountains (Eureka Peak, Pushwalla), Smith Water Canyon, upper Juniper Flats, Wonderland of Rocks (Black Rock, Keys Ranch, Steve Canyon, Wall Street Canyon, Willow Hole).

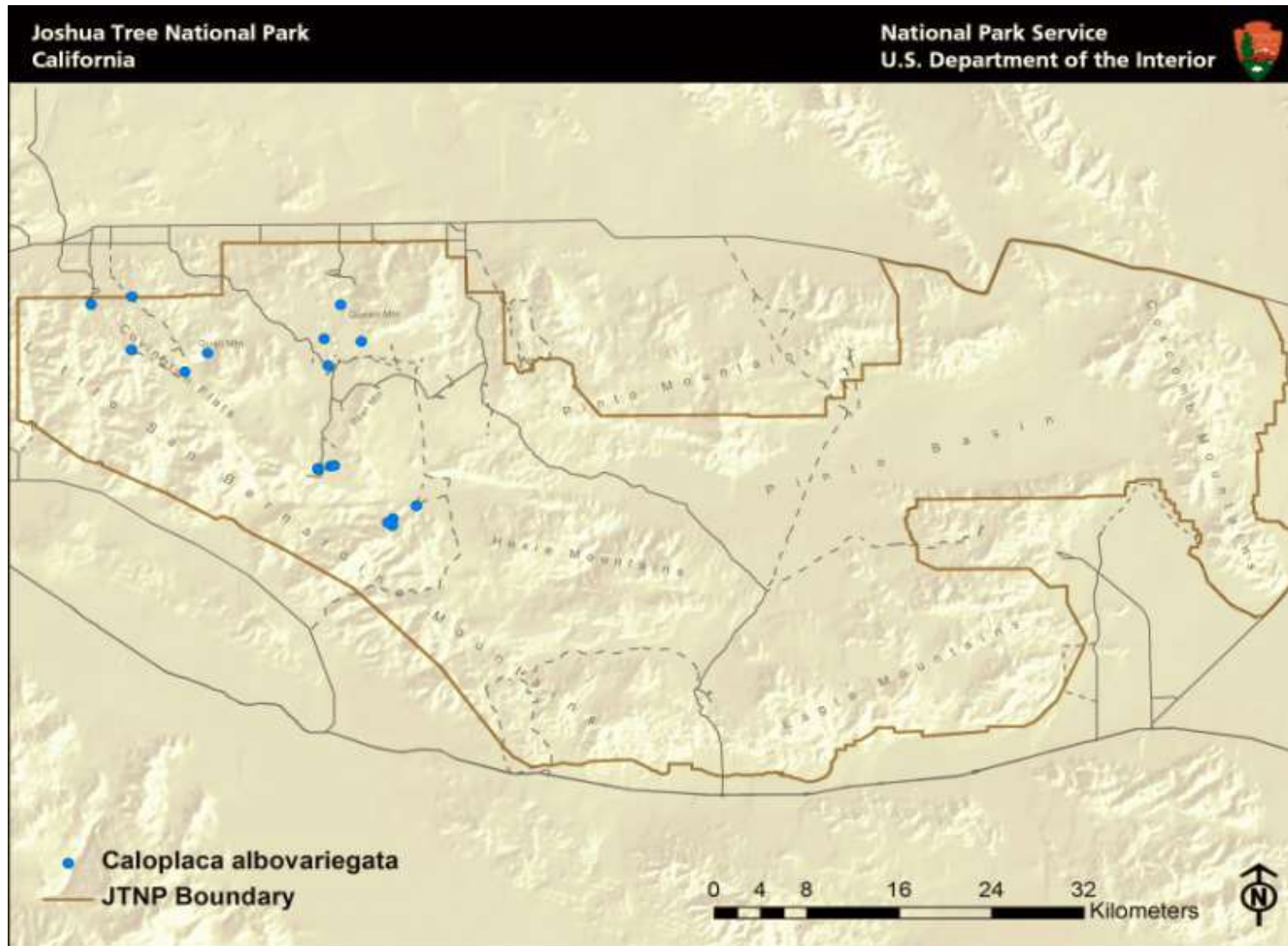
LITERATURE CITED

- Rajakaruna, N., K. Knudsen, A. M. Fryday, R. E. O'Dell, Nathaniel Pope, F. C. Olday, and S. Woolhouse. 2012. Investigation of the importance of rock chemistry for saxicolous lichen communities of the New Idria serpentinite mass, San Benito County, California, USA. *Lichenologist* 44 (5): 695–714.
- Wetmore, C. M. 1994. The lichen genus *Caloplaca* in North and Central America with brown or black apothecia. *Mycologia* 86(6): 813–838.
- Wetmore, C. M. 2007[2008]. *Caloplaca*. In: T. H. Nash, III, C. Gries and F. Bungartz (eds.) *Lichen Flora of the Greater Sonoran Desert Region 3*: 179–220. Lichens Unlimited, Temp.

ACKNOWLEDGEMENTS

The work of Kerry Knudsen was funded by a co-operative agreement between Joshua Tree National Park and the University of California at Riverside (UCR). The work of Jana Kocourková was supported financially by the KONTAKT II, Program of International Cooperation in Research and development for scientific cooperation between the CR and USA, LH 11057 from Ministry of Education, Youth and Sports of the Czech Republic.

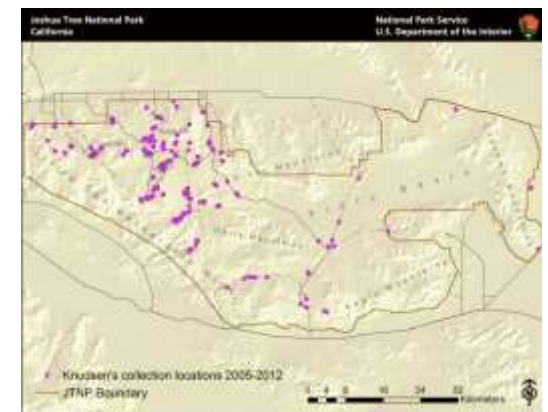
Caloplaca albovariegata



Known distribution of *Caloplaca albovariegata* in JTNP.



Location of Joshua Tree National Park in Southern California



All 238 of Knudsen's and Kocourková's lichen collection sites throughout Joshua Tree National Park between the years of 2005 and 2012.

Map collection, maps made in software ArcGIS, 10.1; electronic form, file type pdf.