

***Caloplaca squamosa* in the Joshua Tree National Park (California, U.S.A.)**

Map collection



Caloplaca squamosa. Photo by Tim Wheeler

Kerry Knudsen, Kocourková Jana*

*Czech University of Life Sciences Prague, Faculty of Environmental Sciences, Department of Ecology, Czech Republic

© 2012

Abstract – *Caloplaca squamosa* is known only in southwestern North America. It is common in the Mojave Desert in California and in adjacent Arizona and frequent in Joshua Tree. It grows on calcareous and non-calcareous rocks; on monzogranite and gneiss in Joshua Tree. The map of distribution of *C. squamosa* in Joshua Tree is presented. We compiled a detailed list of records based on GPS data.

Key words – *Caloplaca squamosa*, lichens, map of distribution, Sonoran and Mojave Deserts, southwestern North America

Authors – Kerry Knudsen¹, Kocourková Jana²

¹The Herbarium, Department of Botany & Plant Sciences, University of California Riverside, California 92521, U.S.A. – e-mail: Knudsen@ucr.edu

²University of Life Sciences Prague, Department of Ecology, Faculty of Environmental Sciences, Kamýcká 129, Praha 6 – Suchbát, CZ – 165 21, Czech Republic – e-mail: kocourkovaj@fzp.czu.cz

***Caloplaca squamosa* (B. de Lesd.) Zahlbr.**

DESCRIPTION. – Wetmore 2007.

WORLD DISTRIBUTION. – Southwestern North America.

SUBSTRATE. – Calcareous and non-calcareous rock (especially in drainage and seeps), concrete; on basalt, monzogranite, and gneiss in Joshua Tree.

NOTES. – *Caloplaca squamosa* is common in the Mojave Desert in California and in adjacent Arizona. It was reported from Granite Mountains (Knudsen and Werth 2008). It documented by 19 collections in the Sonoran and Mojave Deserts in Joshua Tree.

DISTRIBUTION. – Cottonwood Mountains, Coxcomb Mountains, Hexie Mountains, hills and open desert near north and west entrances to park, Little San Bernardino Mountains (Berdo Canyon, Eureka Peak), Pinto Basin, Sheep's Pass, Wilson Canyon, Wonderland of Rocks (Indian Cove).

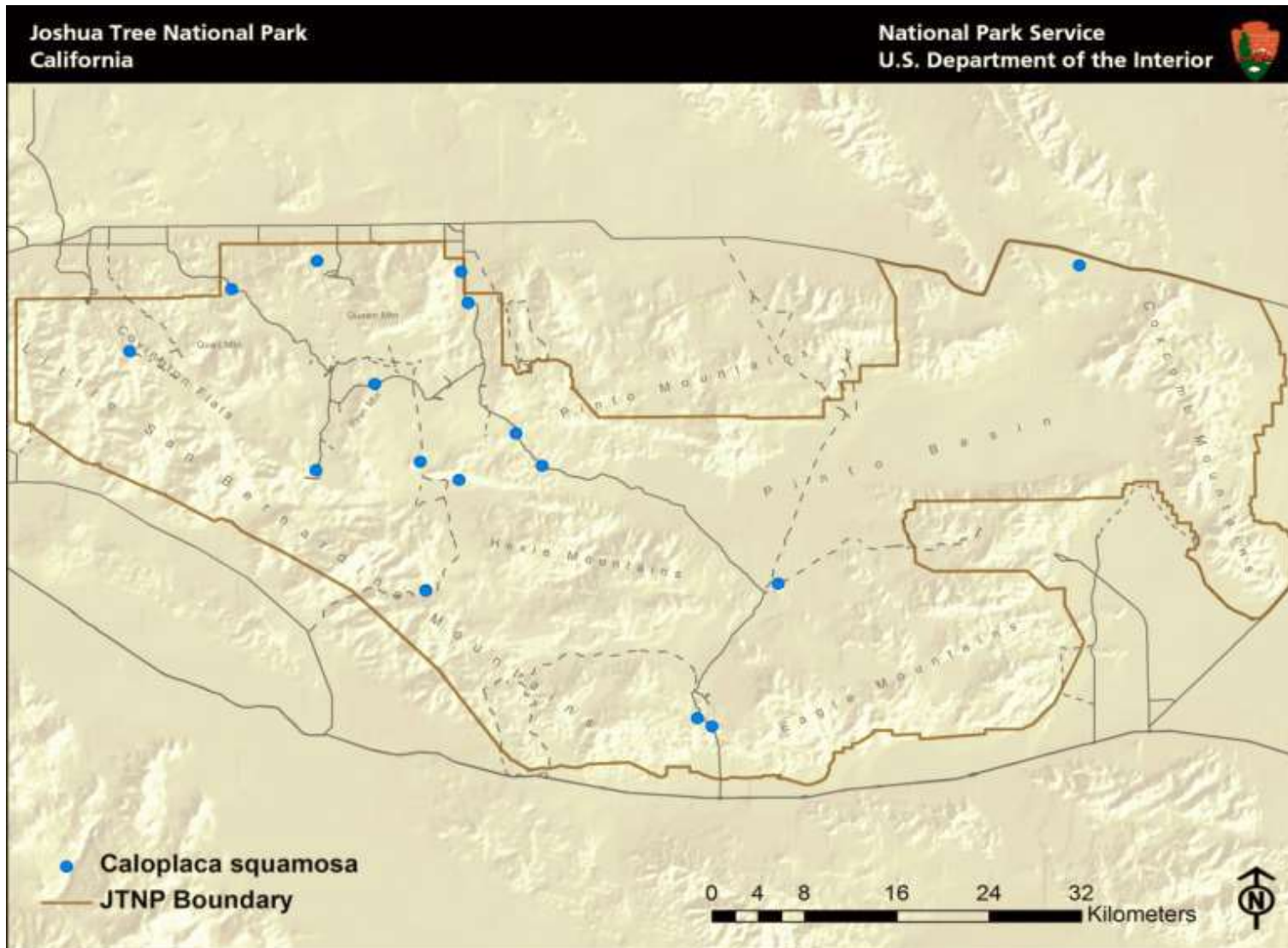
LITERATURE CITED

- Knudsen, K. and S. Werth. 2008. Lichens of the Granite Mountains, Sweeney Granite Mountain Desert Research Center, southwestern Mojave Desert, San Bernardino County, California. *Evansia* 25(1): 15–19.
- Wetmore, C. M. 2007[2008]. *Caloplaca*. In: T. H. Nash, III, C. Gries and F. Bungartz (eds.) Lichen Flora of the Greater Sonoran Desert Region 3: 179–220. Lichens Unlimited, Temp.

ACKNOWLEDGEMENTS

The work of Kerry Knudsen was funded by a co-operative agreement between Joshua Tree National Park and the University of California at Riverside (UCR). The work of Jana Kocourková was supported financially by the KONTAKT II, Program of International Cooperation in Research and development for scientific cooperation between the CR and USA, LH 11057 from Ministry of Education, Youth and Sports of the Czech Republic.

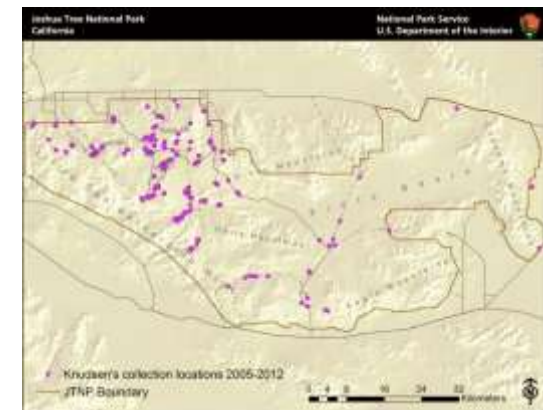
Caloplaca squamosa



Known distribution of *Caloplaca squamosa* in JTNP.



Location of Joshua Tree National Park in Southern California



All 238 of Knudsen's and Kocourková's lichen collection sites throughout Joshua Tree National Park between the years of 2005 and 2012.

Map collection, maps made in software ArcGIS, 10.1; electronic form, file type pdf.