

# ***Clavascidium lacinulatum* in the Joshua Tree National Park (California, U.S.A.)**

**Map collection**



*Clavascidium lacinulatum*. Photo by Jana Kocourková.

**Kerry Knudsen, Kocourková Jana\***

\*Czech University of Life Sciences Prague, Faculty of Environmental Sciences, Department of Ecology, Czech Republic

© 2012

**Abstract** – *Clavascidium lacinulatum* is a cosmopolitan lichen which is common in biological soil crusts throughout western North America. It binds and stabilizes soil with its long rhizines and a rhizohyphal weft. In the Mojave and Sonoran Deserts in Joshua Tree it occurs as the solitary lichen or with *Collema coccophorum*. It is documented by 32 collections. All specimens were variety *lacinulatum*. The map of distribution of *C. lacinulatum* in Joshua Tree National Park is presented. We compiled a detailed list of records based on GPS data.

**Key words** – *Clavascidium lacinulatum*, lichens, map of distribution, soil cruts, var. *lacinulatum*, Joshua Tree, western North America

**Authors** – Kerry Knudsen<sup>1</sup>, Kocourková Jana<sup>2</sup>

<sup>1</sup>The Herbarium, Department of Botany & Plant Sciences, University of California Riverside, California 92521, U.S.A. – e-mail: Knudsen@ucr.edu

<sup>2</sup>University of Life Sciences Prague, Department of Ecology, Faculty of Environmental Sciences, Kamýcká 129, Praha 6 – Suchdol, CZ – 165 21, Czech Republic – e-mail: kocourkovaj@fzp.czu.cz

***Clavascidium lacinulatum*** (Ach.) M. Prieto

DESCRIPTION. – Breuss 2002 (as *Placidium lacinulatum*).

WORLD DISTRIBUTION. – Cosmopolitan.

SUBSTRATE. – Soil.

NOTES. – *Clavascidium lacinulatum* is common in biological soil crusts throughout western North America. It has long rhizines and a rhizohyphal weft that binds and stabilizes soil. It was usually found in biological soil crusts in the Mojave and Sonoran Deserts in Joshua Tree as the solitary lichen or with *Collema coccophorum*. It is documented by 32 collections. All specimens were variety *lacinulatum*.

DISTRIBUTION. – Cottonwood Mountains (Cottonwood Canyon), Coxcomb Mountains, Hexie Mountains, Little San Bernardino Mountains (above Geology Tour Road, Berdoo Canyon), Lost Horse Mountains, Lost Horse Valley, lower Covington Flats, Pinkham Wash, Pinto Basin, Pleasant Valley, Queen Valley, Ryan Mountain, Saddle Rock, Skull Rock, Smith Water Canyon, Smoke Tree Wash, Squaw Tank, Stirrup Tank, Wonderland of Rocks (Boy Scout Trail, Keys Ranch, near west entrance).

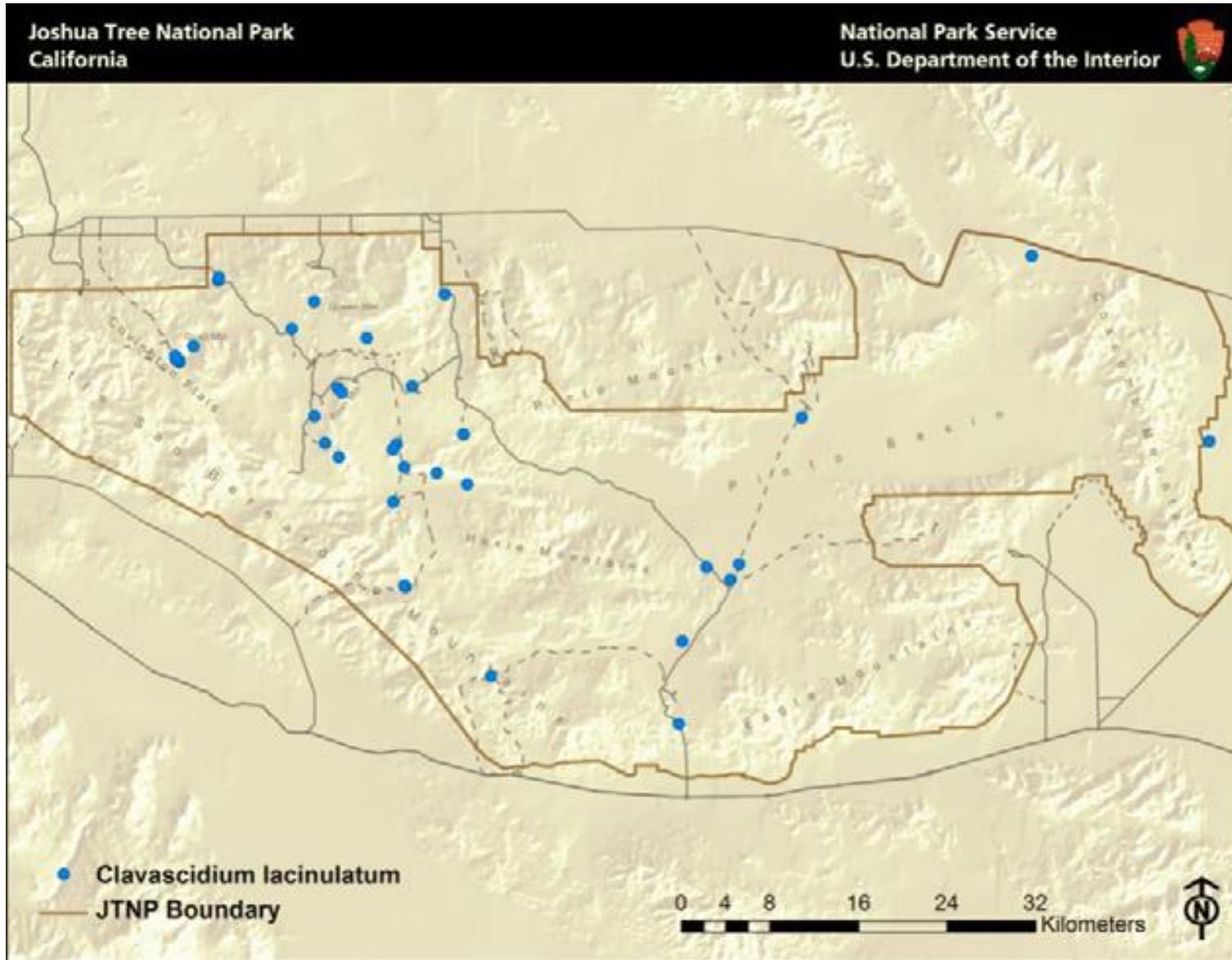
#### LITERATURE CITED

Breuss, O 2002. *Placidium*. In: T.H. Nash III, B.D. Ryan, C. Gries and F. Bungartz (eds.) Lichen Flora of the Greater Sonoran Desert Region 1: 384–393. Lichens Unlimited, Tempe, AZ.

#### ACKNOWLEDGEMENTS

The work of Kerry Knudsen was funded by a co-operative agreement between Joshua Tree National Park and the University of California at Riverside (UCR). The work of Jana Kocourková was supported financially by the KONTAKT II, Program of International Cooperation in Research and development for scientific cooperation between the CR and USA, LH 11057 from Ministry of Education, Youth and Sports of the Czech Republic.

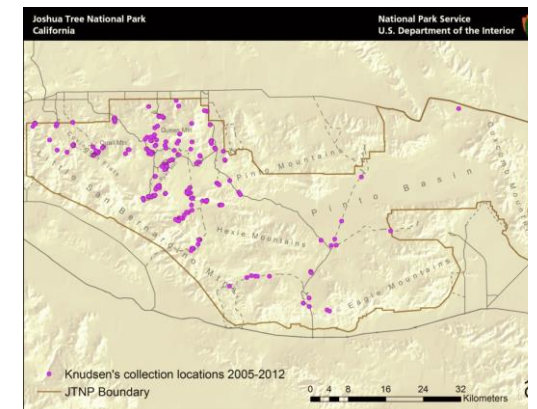
# *Clavascidium lacinulatum*



Known distribution of *Clavascidium lacinulatum* in JTNP.



Location of Joshua Tree National Park in Southern California



All 238 of Knudsen's and Kocourková's lichen collection sites throughout Joshua Tree National Park between the years of 2005 and 2012.

Map collection, maps made in software ArcGIS, 10.1; electronic form, file type pdf.