

# ***Dermatocarpon americanum* in the Joshua Tree National Park (California, U.S.A.)**

**Map collection**



*Dermatocarpon americanum*. Photo by Jana Kocourková

**Kerry Knudsen, Kocourková Jana\***

\*Czech University of Life Sciences Prague, Faculty of Environmental Sciences, Department of Ecology, Czech Republic

© 2012

**Abstract** – *Dermatocarpon americanum* is known only in North America. It is common throughout California and on the Channel Islands. It is usually occurring on calcareous and non-calcareous rocks in drainages or seeps. It is common lichen in the Mojave and Sonoran Deserts in Joshua Tree where it grows on basalt, gneiss, and monzogranite. The map of distribution of *D. americanum* in Joshua Tree National Park is presented. We compiled a detailed list of records based on GPS data.

**Key words** – *Dermatocarpon americanum*, lichens, map of distribution, Channel Islands, Mojave and Sonoran Deserts

**Authors** – Kerry Knudsen<sup>1</sup>, Kocourková Jana<sup>2</sup>

<sup>1</sup>The Herbarium, Department of Botany & Plant Sciences, University of California Riverside, California 92521, U.S.A. – e-mail: Knudsen@ucr.edu

<sup>2</sup>University of Life Sciences Prague, Department of Ecology, Faculty of Environmental Sciences, Kamýcká 129, Praha 6 – Suchbát, CZ – 165 21, Czech Republic – e-mail: kocourkovaj@fzp.czu.cz

### ***Dermatocarpon americanum* Vainio**

DESCRIPTION. – Heiömarsson and Breuss 2004.

WORLD DISTRIBUTION. – North America.

SUBSTRATE. – Calcareous and non-calcareous rock especially in drainages and seeps; on basalt, gneiss, and monzogranite in Joshua Tree.

NOTES. – *Dermatocarpon americanum* is common throughout California and on the Channel Islands. It is usually growing on drainages or seeps and is common in the Mojave and Sonoran Deserts in Joshua Tree. It is documented by 22 collections.

DISTRIBUTION. – Cottonwood Mountains, Hidden Valley, Juniper Flats, Little San Bernardino Mountains (Black Rock, Eureka Peak), Lost Horse Mountains, lower and upper Covington Flats, Malapai Hill (on basalt), Pine City, Pinkham Canyon, Queen Valley, Saddle Rock, Smith Water Canyon, Wonderland of Rocks (Keys Ranch).

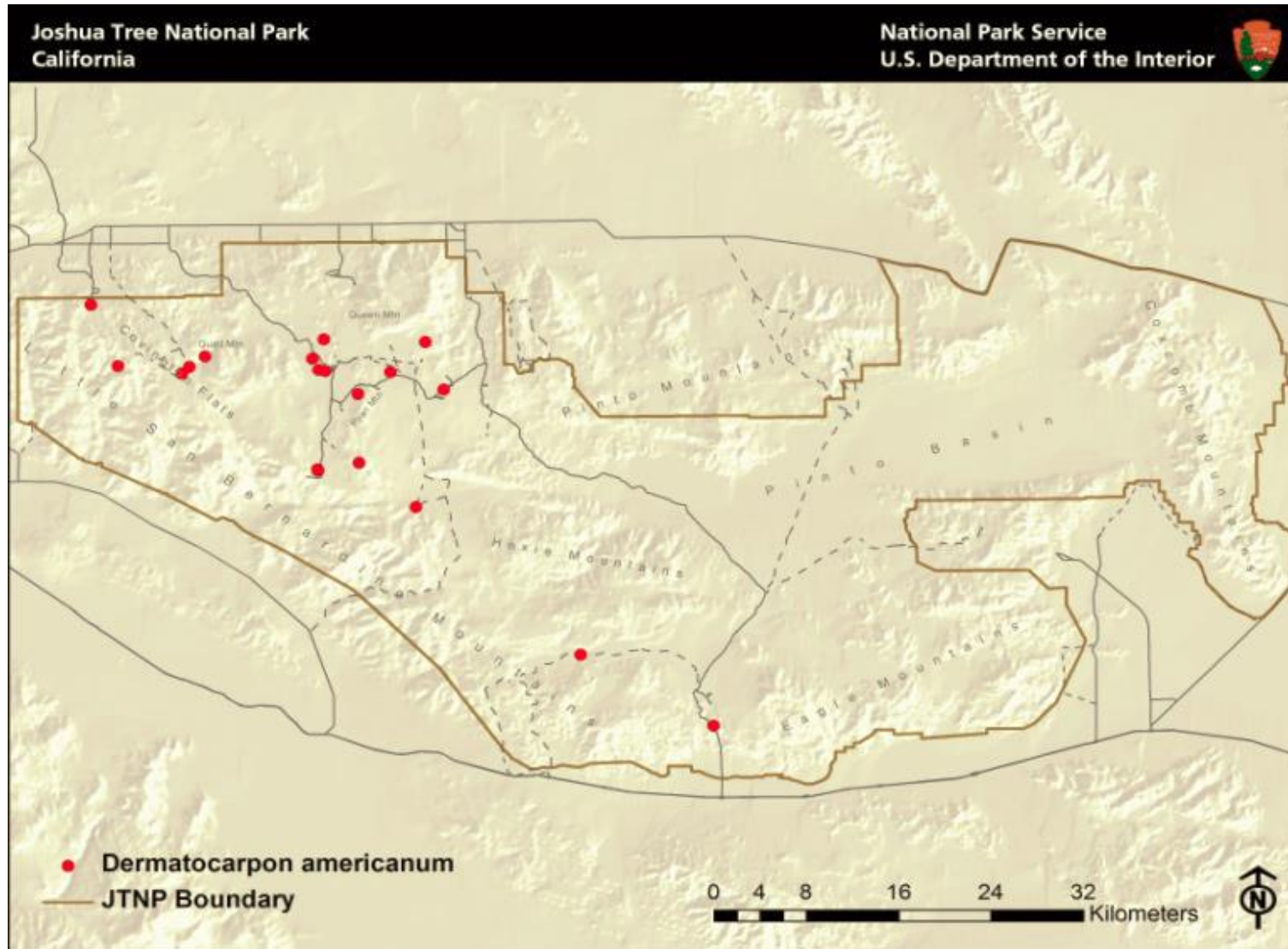
### LITERATURE CITED

Heiömarsson S. and O. Breuss. 2004. *Dermatocarpon*. In: T.H. Nash III, B.D. Ryan, P. Diederich, C. Gries, and F. Bungartz (eds.) Lichen flora of the Greater Sonoran Desert Region 2: 88–93. Lichens Unlimited, Tempe, AZ.

### ACKNOWLEDGEMENTS

The work of Kerry Knudsen was funded by a co-operative agreement between Joshua Tree National Park and the University of California at Riverside (UCR). The work of Jana Kocourková was supported financially by the KONTAKT II, Program of International Cooperation in Research and development for scientific cooperation between the CR and USA, LH 11057 from Ministry of Education, Youth and Sports of the Czech Republic.

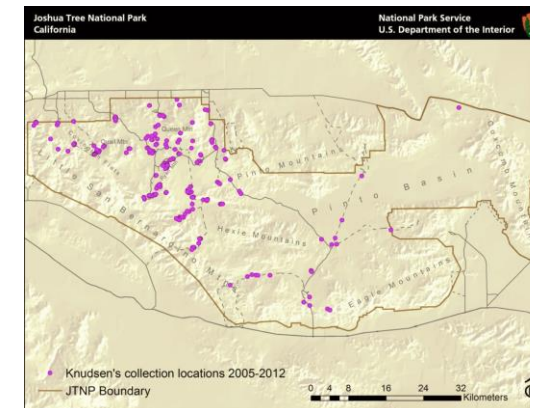
# *Dermatocarpon americanum*



Known distribution of *Dermatocarpon americanum* in JTNP.



Location of Joshua Tree National Park in Southern California



All 238 of Knudsen's and Kocourková's lichen collection sites throughout Joshua Tree National Park between the years of 2005 and 2012.

Map collection, maps made in software ArcGIS, 10.1; electronic form, file type pdf.