

***Lecidea hassei* in the Joshua Tree National Park (California, U.S.A.)**

Map collection



Lecidea hassei. Photo by Tim Wheeler

Kerry Knudsen, Kocourková Jana*

*Czech University of Life Sciences Prague, Faculty of Environmental Sciences, Department of Ecology, Czech Republic

© 2012

Abstract – *Lecidea hassei* is known only in western North America and it is California endemic. It is common in the Mojave Desert in Joshua Tree, documented by 15 collections. Joshua Tree National Park has the largest known population in California. It occurs on non-calcareous rocks; in Joshua Tree on granite and monzogranite. The map of distribution of *L. hassei* in Joshua Tree National Park is presented. We compiled a detailed list of records based on GPS data.

Key words – *Lecidea hassei*, *L. laboriosa*, lichens, map of distribution, California endemic, Mojave Desert

Authors – Kerry Knudsen¹, Kocourková Jana²

¹The Herbarium, Department of Botany & Plant Sciences, University of California Riverside, California 92521, U.S.A. – e-mail: Knudsen@ucr.edu

²University of Life Sciences Prague, Department of Ecology, Faculty of Environmental Sciences, Kamýcká 129, Praha 6 – Suchbát, CZ – 165 21, Czech Republic – e-mail: kocourkovaj@fzp.czu.cz

***Lecidea hassei* Zahlbr.**

DESCRIPTION. – Hertel and Printzen 2004.

WORLD DISTRIBUTION. – Western North America (California endemic).

SUBSTRATE. – Non-calcareous rock; in Joshua Tree on granite and monzogranite.

NOTES. – *Lecidea hassei* was originally described from the Ballona Bluffs in Los Angeles. It is endemic to southern California. It has been verified by Hertel from San Gabriel Mountains and from a collection by B.D. Ryan in Agua Tibia Wilderness Area in Riverside County (CNALH 2012). It occurs in the Laguna, San Bernardino, and San Jacinto Mountains (Devil's Slide, The Saddle, Tahquitz Peak), and Wildomar (Menifee Hills) (UCR Herbarium 2012). It is similar to *Lecidea laboriosa* but has schizopeltic acid. It is common in the Mojave Desert in Joshua Tree, documented by 15 collections. Joshua Tree National Park has the largest known population of this California endemic.

DISTRIBUTION. – Little San Bernardino Mountains (Black Rock, Keys View, Long Canyon), Lost Horse Mountains, Pine City, Sheep's Pass, Squaw Tank.

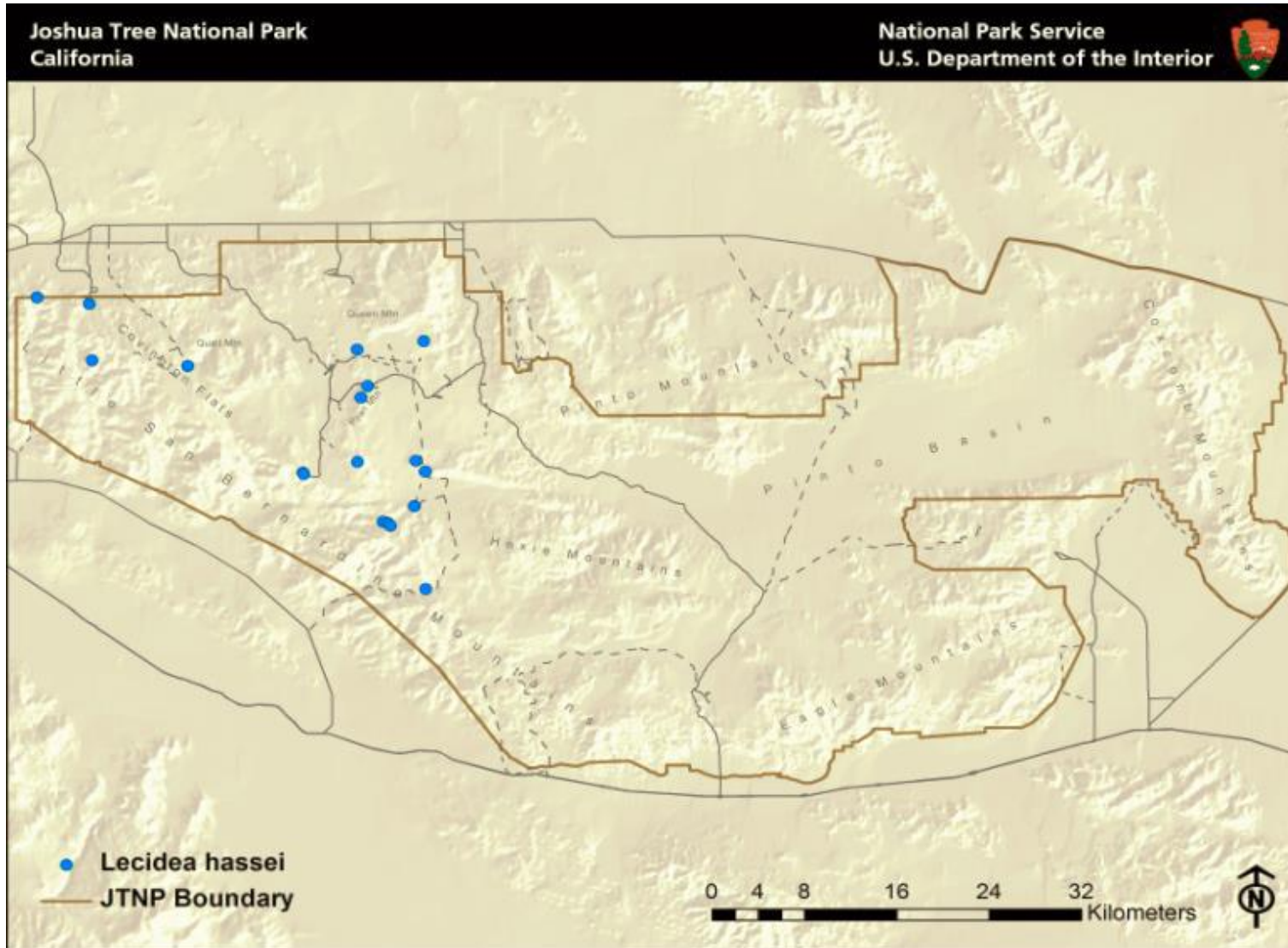
LITERATURE CITED

Hertel, H. and C. Printzen. 2004. *Lecidea*. In: T.H. Nash III, B.D. Ryan, P. Diederich, C. Gries, and F. Bungartz (eds.). Lichen Flora of the Greater Sonoran Desert Region 2: 287–309. Lichens Unlimited, Tempe, AZ.

ACKNOWLEDGEMENTS

The work of Kerry Knudsen was funded by a co-operative agreement between Joshua Tree National Park and the University of California at Riverside (UCR). The work of Jana Kocourková was supported financially by the KONTAKT II, Program of International Cooperation in Research and development for scientific cooperation between the CR and USA, LH 11057 from Ministry of Education, Youth and Sports of the Czech Republic.

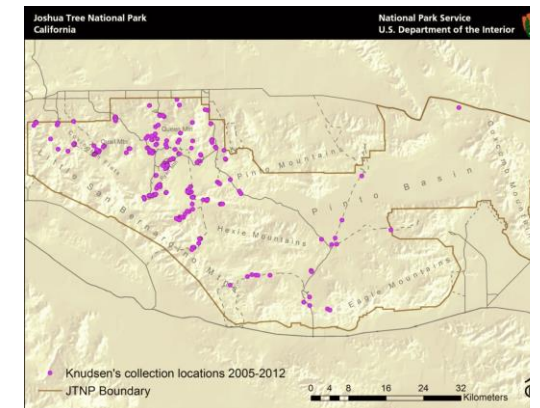
Lecidea hassei



Known distribution of *Lecidea hassei* in JTNP.



Location of Joshua Tree National Park in Southern California



All 238 of Knudsen's and Kocourková's lichen collection sites throughout Joshua Tree National Park between the years of 2005 and 2012.

Map collection, maps made in software ArcGIS, 10.1; electronic form, file type pdf.