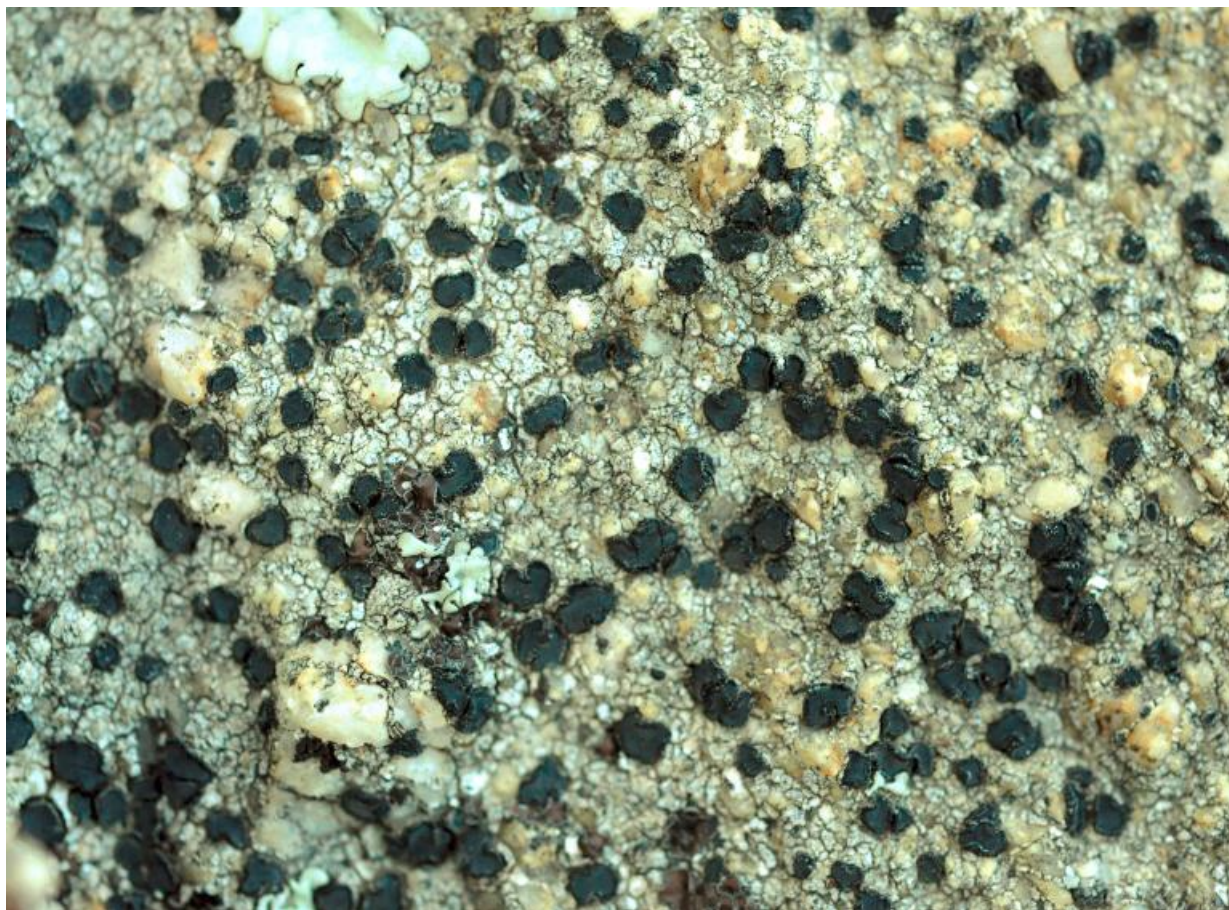


***Lecidea laboriosa* in the Joshua Tree National Park (California, U.S.A.)**

**Map collection**



*Lecidea laboriosa*. Photo by Jana Kocourková.

**Kerry Knudsen, Kocourková Jana\***

\*Czech University of Life Sciences Prague, Faculty of Environmental Sciences, Department of Ecology, Czech Republic

**Abstract** – *Lecidea laboriosa* occurs in Europe and North America. It is the most common endolithic *Lecidea* lichen in California, occurring from the coast to the mountains, and in the desert. Henry Imshaug collected *L. laboriosa* on top of Mount Whitney at elevation 4421 m above sea level. It occurs on non-calcareous rock. In the Mojave Desert in Joshua Tree is frequent on granite. The map of distribution of *L. laboriosa* in Joshua Tree National Park is presented. We compiled a detailed list of records based on GPS data.

**Key words** – *Lecidea laboriosa*, lichens, map of distribution, Mt Whitney, Mojave Desert

**Authors** – Kerry Knudsen<sup>1</sup>, Kocourková Jana<sup>2</sup>

<sup>1</sup>The Herbarium, Department of Botany & Plant Sciences, University of California Riverside, California 92521, U.S.A. – e-mail: Knudsen@ucr.edu

<sup>2</sup>University of Life Sciences Prague, Department of Ecology, Faculty of Environmental Sciences, Kamýcká 129, Praha 6 – Suchbát, CZ – 165 21, Czech Republic – e-mail: kocourkovaj@fzp.czu.cz

### ***Lecidea laboriosa* Müll. Arg.**

DESCRIPTION. – Hertel and Printzen 2004.

WORLD DISTRIBUTION. – Europe, North America.

SUBSTRATE. – Non-calcareous rock; in Joshua Tree on granite.

NOTES. – *Lecidea laboriosa* is the most common endolithic *Lecidea* species in California, occurring from the coast to the mountains, and in the desert. Henry Imshaug collected it on top of Mount Whitney in California at 4421 m (CNALH 2012). It occasionally forms an ecorticate areolate thallus, especially near the coast. It is frequent in the Mojave Desert in Joshua Tree, documented by 14 collections, all on granite. Specimens have either 4-O-demethylplanic acid occasionally with trace of planic acid, or no secondary metabolites. Some specimens may appear at first to have a dark hypothecium but the hypothecium is only pale and “ochre” in thin-cut sections or squashes.

DISTRIBUTION. – Juniper Flats, Little San Bernardino Mountains (Berdo Canyon, Black Rock, Eureka Peak, Keys View), Queen Valley, Sheep’s Pass, Smith Water Canyon, Wonderland of Rocks (Keys Ranch).

### LITERATURE CITED

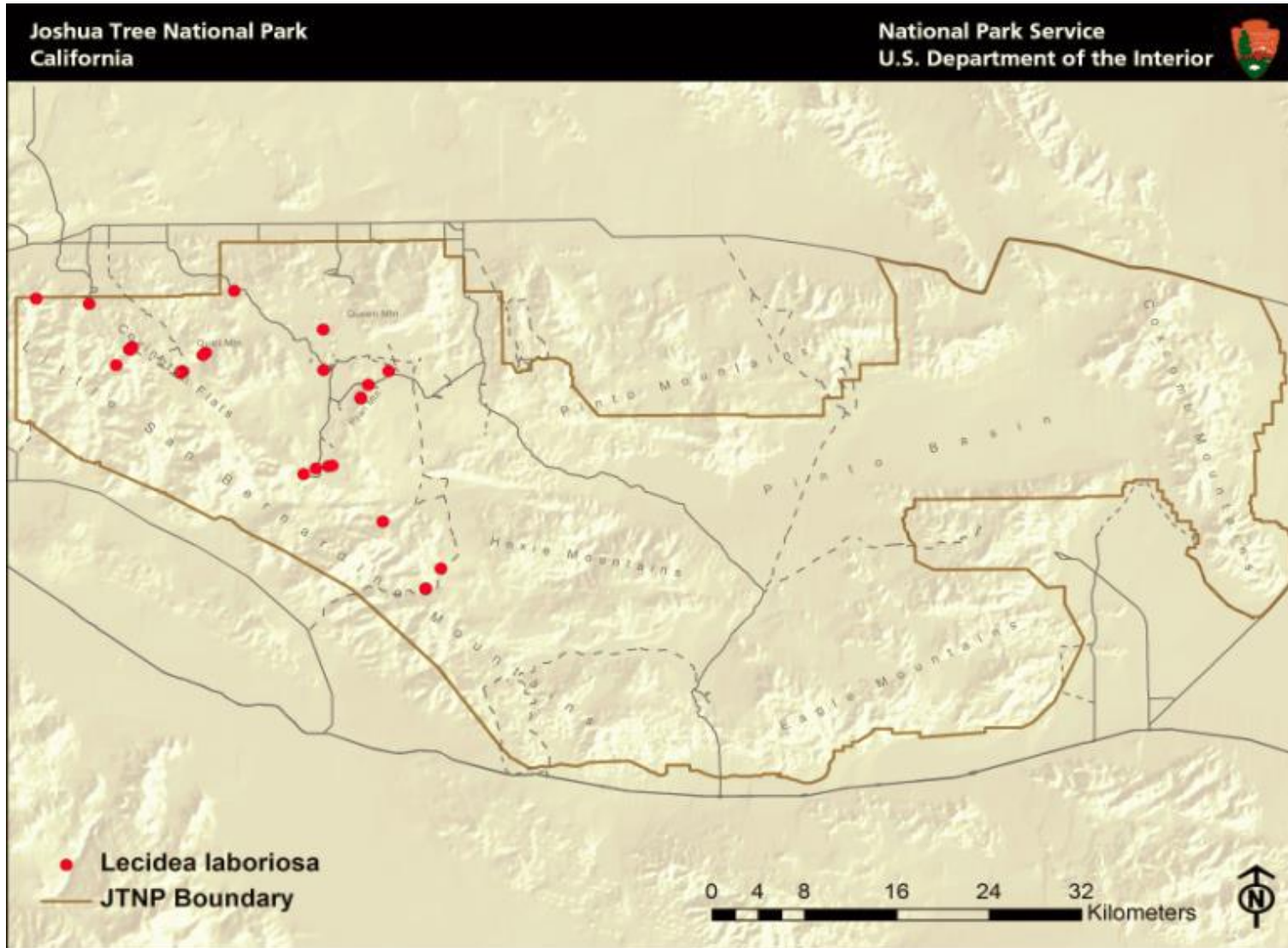
Hertel H. and C. Printzen. 2004. *Lecidea*. In: T.H. Nash III, B.D. Ryan, P. Diederich, C. Gries, and F. Bungartz (eds.). Lichen Flora of the Greater Sonoran Desert Region 2: 287–309. Lichens Unlimited, Tempe, AZ.

### ACKNOWLEDGEMENTS

The work of Kerry Knudsen was funded by a co-operative agreement between Joshua Tree National Park and the University of California at Riverside (UCR). The work of Jana Kocourková was supported financially by the KONTAKT II, Program of International Cooperation in Research and development for scientific cooperation between the CR and USA, LH 11057 from Ministry of Education, Youth and Sports of the Czech Republic.



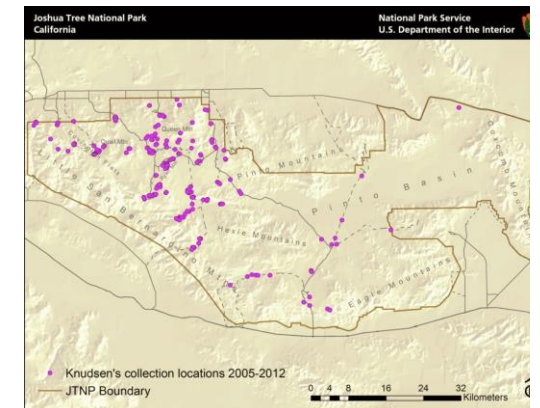
*Lecidea laboriosa*



Known distribution of *Lecidea laboriosa* in JTNP.



Location of Joshua Tree National Park in Southern California



All 238 of Knudsen's and Kocourková's lichen collection sites throughout Joshua Tree National Park between the years of 2005 and 2012.

Map collection, maps made in software ArcGIS, 10.1; electronic form, file type pdf.