

***Rhizoplaca chrysoleuca* in the Joshua Tree National Park (California, U.S.A.)**

Map collection



Rhizoplaca chrysoleuca. Photo by Jana Kocourková.

Kerry Knudsen, Kocourková Jana*

*Czech University of Life Sciences Prague, Faculty of Environmental Sciences, Department of Ecology, Czech Republic

© 2012

Abstract – *Rhizoplaca chrysoleuca* is known in Asia, Europe, and North America and is common in California. It is documented by 12 collections in the Mojave Desert in Joshua Tree. It grows on non-calcareous rock; on basalt, gneiss, and granite in Joshua Tree. The map of distribution of *R. chrysoleuca* in Joshua Tree National Park is presented. We compiled a detailed list of records based on GPS data.

Key words – *Rhizoplaca chrysoleuca*, lichens, map of distribution, Mojave and Sonoran Deserts, California

Authors – Kerry Knudsen¹, Kocourková Jana²

¹The Herbarium, Department of Botany & Plant Sciences, University of California Riverside, California 92521, U.S.A. – e-mail: Knudsen@ucr.edu

²University of Life Sciences Prague, Department of Ecology, Faculty of Environmental Sciences, Kamýcká 129, Praha 6 – Suchbát, CZ – 165 21, Czech Republic – e-mail: kocourkovaj@fzp.czu.cz

***Rhizoplaca chrysoleuca* (Sm.) Zopf**

DESCRIPTION. – Ryan 2002.

WORLD DISTRIBUTION. – Asia, Europe, North America.

SUBSTRATE. – Non-calcareous rock; on basalt, gneiss, and granite in Joshua Tree.

NOTES. – *Rhizoplaca chrysoleuca* is common in California. It is documented by 12 collections in the Mojave Desert in Joshua Tree.

DISTRIBUTION. – Hills near north entrance, Little San Bernardino Mountains (Eureka Peak, Pushwalla), Lost Horse Mountains, Malapai Hill (basalt), ridge northeast of Quail Mountain, Ryan Mountain, Sheep's Pass, Queen Mountain.

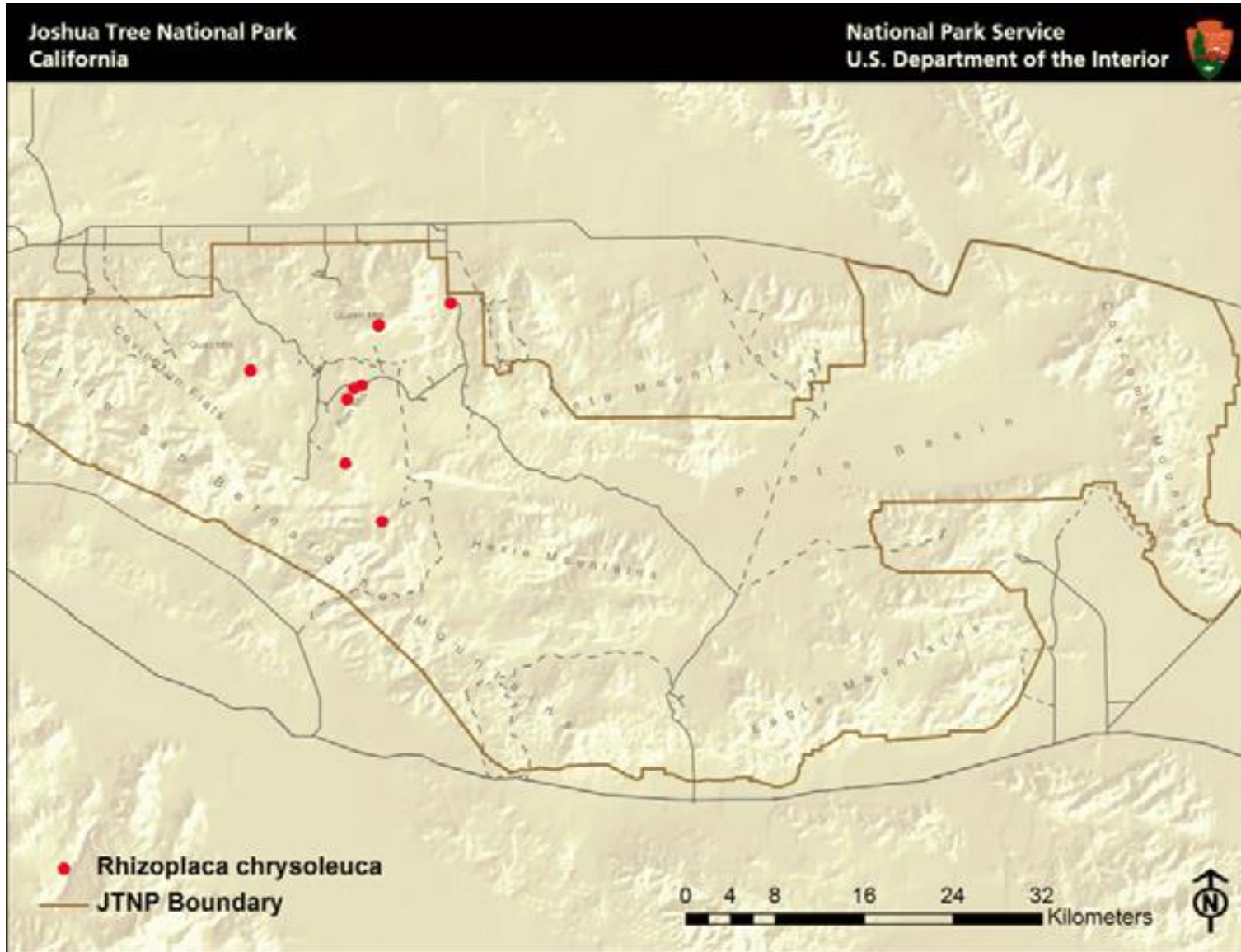
LITERATURE CITED

Ryan, B.D. 2002. *Rhizoplaca*. In: T.H. Nash III, B.D. Ryan, C. Gries and F. Bungartz (eds.). Lichen Flora of the Greater Sonoran Desert Region 1: 442–448. Lichens Unlimited, Tempe, AZ.

ACKNOWLEDGEMENTS

The work of Kerry Knudsen was funded by a co-operative agreement between Joshua Tree National Park and the University of California at Riverside (UCR). The work of Jana Kocourková was supported financially by the KONTAKT II, Program of International Cooperation in Research and development for scientific cooperation between the CR and USA, LH 11057 from Ministry of Education, Youth and Sports Czech Republic.

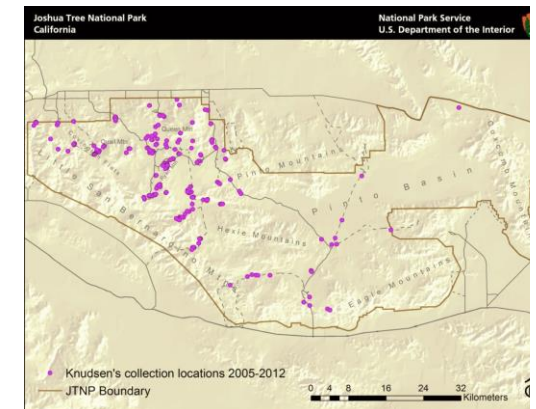
Rhizoplaca chrysoleuca



Known distribution of *Rhizoplaca chrysoleuca* in JTNP.



Location of Joshua Tree National Park in Southern California



All 238 of Knudsen's and Kocourková's lichen collection sites throughout Joshua Tree National Park between the years of 2005 and 2012.

Map collection, maps made in software ArcGIS, 10.1; electronic form, file type pdf.