

# ***Xanthoparmelia mexicana* in the Joshua Tree National Park (California, U.S.A.)**

**Map collection**



*Xanthoparmelia mexicana*. Photo by Jana Kocourková.

**Kerry Knudsen, Kocourková Jana\***

\*Czech University of Life Sciences Prague, Faculty of Environmental Sciences, Department of Ecology, Czech Republic

© 2012

**Abstract** – *Xanthoparmelia mexicana* is a cosmopolitan species. It is common throughout California and is also common in the Sonoran and Mojave Desert in Joshua Tree National Park, documented by 40 collections. It was collected on non-calcareous rock, rarely on soil; on gneiss and monzogranite. Part of the specimens contained an unknown fatty acid. The map of known distribution of *X. mexicana* in Joshua Tree is presented. We compiled a detailed list of records based on GPS data.

**Key words** – *Xanthoparmelia mexicana*, lichens, map of distribution, fatty acid, Sonoran and Mojave Deserts

**Authors** – Kerry Knudsen<sup>1</sup>, Kocourková Jana<sup>2</sup>

<sup>1</sup>The Herbarium, Department of Botany & Plant Sciences, University of California Riverside, California 92521, U.S.A. – e-mail: Knudsen@ucr.edu

<sup>2</sup>University of Life Sciences Prague, Department of Ecology, Faculty of Environmental Sciences, Kamýcká 129, Praha 6 – Suchbát, CZ – 165 21, Czech Republic – e-mail: kocourkovaj@fzp.czu.cz

### ***Xanthoparmelia mexicana* (Gyelnik) Hale**

DESCRIPTION. – Nash and Elix 2004.

WORLD DISTRIBUTION. – Cosmopolitan.

SUBSTRATE. – Non-calcareous rock, rarely on soil; on gneiss and monzogranite in Joshua Tree.

NOTES. – *Xanthoparmelia mexicana* is common throughout California. It is common in the Sonoran and Mojave Desert in Joshua Tree National Park, documented by 40 collections. Part of the specimens contained an unknown fatty acid (Lendemer, *pers. comm.*).

DISTRIBUTION. – Cottonwood Mountains (Cottonwood Springs), Hidden Valley, Little San Bernardino Mountains (Eureka Peak), Lost Horse Mountains, Lost Horse Valley, Pine City, Pinkham Canyon, Pinto Mountains (Belle Mountain), Queen Mountain, Ryan Mountain, Smith Water Canyon, Stirrup Tank, Wonderland of Rocks (Keys Ranch, near west entrance, Willow Hole).

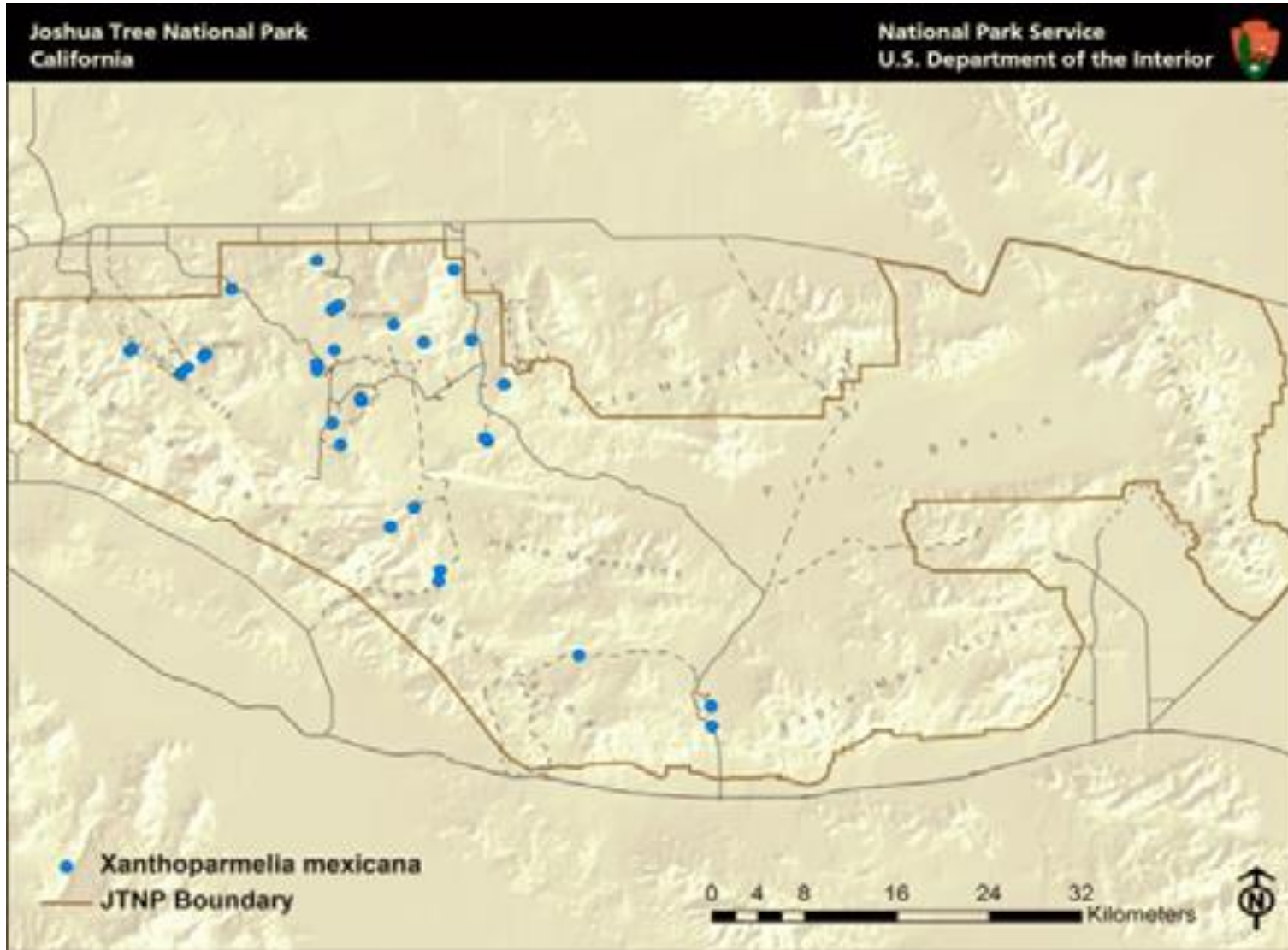
### LITERATURE CITED

Nash, III, T.H. and J.A. Elix. 2004. *Xanthoparmelia*. In: T.H. Nash III, B.D. Ryan, P. Diederich, C. Gries, and F. Bungartz (eds.) Lichen Flora of the Greater Sonoran Desert Region 2: 566–605. Lichens Unlimited, Tempe, AZ.

### ACKNOWLEDGEMENTS

The work of Kerry Knudsen was funded by a co-operative agreement between Joshua Tree National Park and the University of California at Riverside (UCR). The work of Jana Kocourková was supported financially by the KONTAKT II, Program of International Cooperation in Research and development for scientific cooperation between the CR and USA, LH 11057 from Ministry of Education, Youth and Sports of the Czech Republic.

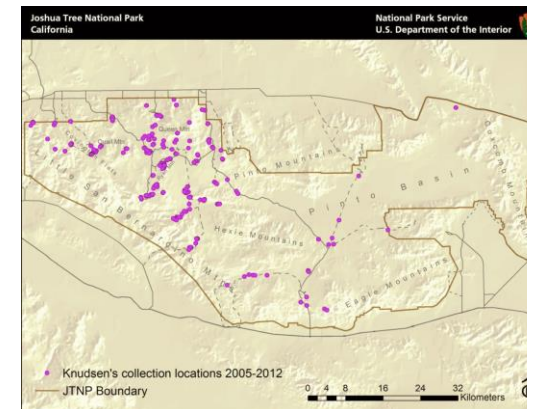
# *Xanthoparmelia mexicana*



Known distribution of *Xanthoparmelia mexicana* in JTNP.



Location of Joshua Tree National Park in Southern California



All 238 of Knudsen's and Kocourková's lichen collection sites throughout Joshua Tree National Park between the years of 2005 and 2012.

Map collection, maps made in software ArcGIS, 10.1; electronic form, file type pdf.